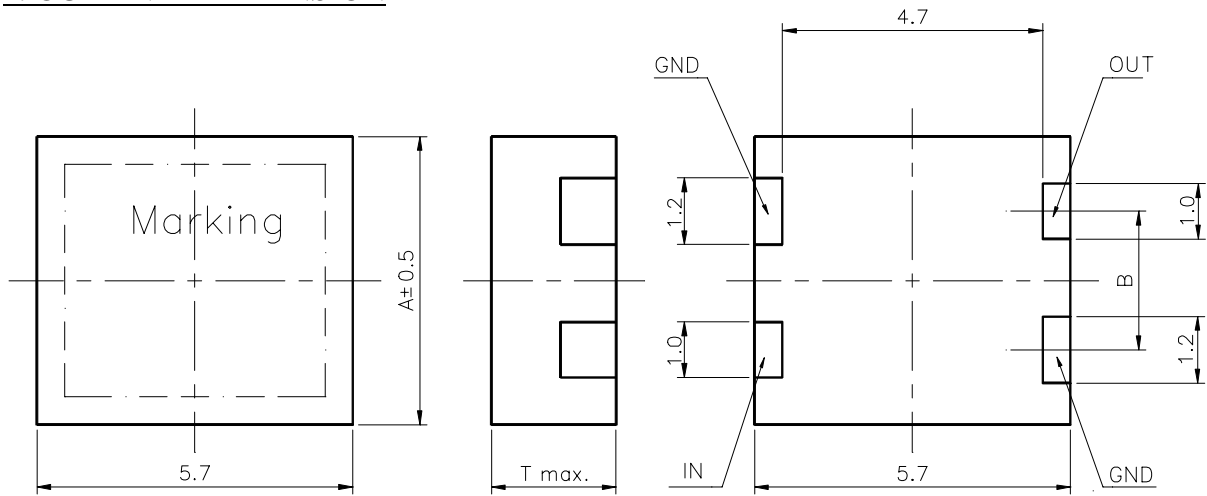


# SPECIFICATION OF DIELECTRIC FILTER

TOKO P/No: TDF2A-2450T-10

## 1. OUTLINE DIMENSION



▪ Marking: 2450-10  
TOKO

A=5.1  
B=2.5  
T=2.25

Tolerance : ±0.3  
Unit : mm

## 2. ELECTRICAL CHARACTERISTICS

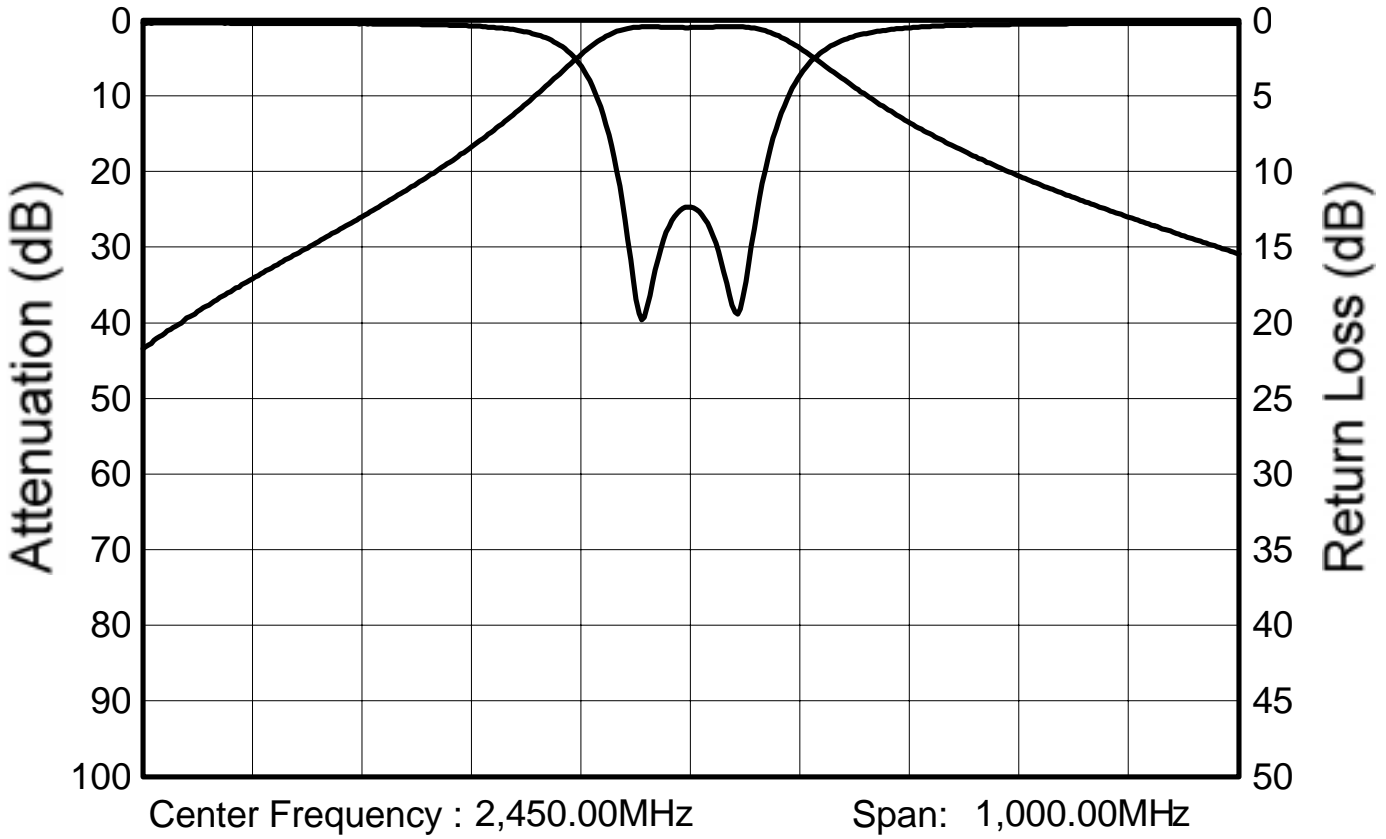
Center Frequency (Fo)	:	2450MHz
Passband Width	:	Fo±50MHz
Input Output Impedance	:	50ohm
Insertion Loss in Passband	:	2.0dB max.
Ripple in Passband	:	1.0dB max.
V.S.W.R. in Passband	:	2.0 max.
Attenuation	:	20dB <sup>1</sup> min. at Fo-280MHz
	:	16dB <sup>1</sup> min. at Fo+280MHz

(All Specifications are an absolute value.)<sup>2</sup>

Rev.3	JUL.23.1997	S.Ohtsuka
Rev.2	NOV.15.1995	Sano
Rev.1	JUN.29.1994	Kikuyama
Orig.	APR.19.1993	
Issues		Sig.

# Test Data of Dielectric Filter

Toko No. : TDF2A-2450T-10



Passband Insertion Loss	0.97dB
Passband Ripple	0.16dB
Passband V.S.W.R.	1.64
Attenuation at 2,170.00MHz at 2,730.00MHz	24.24dB 19.40dB

Date : 96.11.01

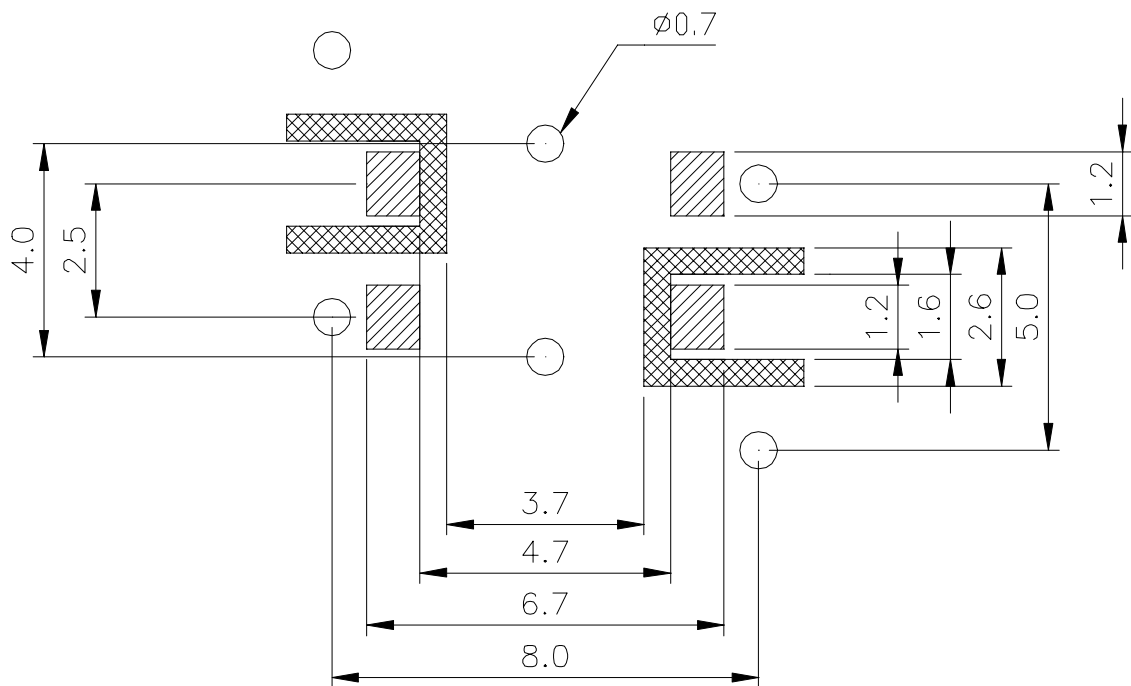
Instrument : WILTRON 37217B



Toko, INC.

## PCB Recommended Pattern For Dielectric Filter

TOKO P/No : TDF2A-2450T-10



 Parts of not coppered.  
(Other parts are coppered)

 Soldering parts.

Back plane is all coppered.  
All holes are plated-through holes.

### **SUBSTRATE MATERIAL:**

BT Resin CCL-H870 t=0.9mm.

CCL-H870's typical dielectric constant is 3.6 at 1GHz.

### **CAUTION:**

All terminals of this filter are connected to GND.

Therefore, it must be used without DC voltage.

TOKO,INC.